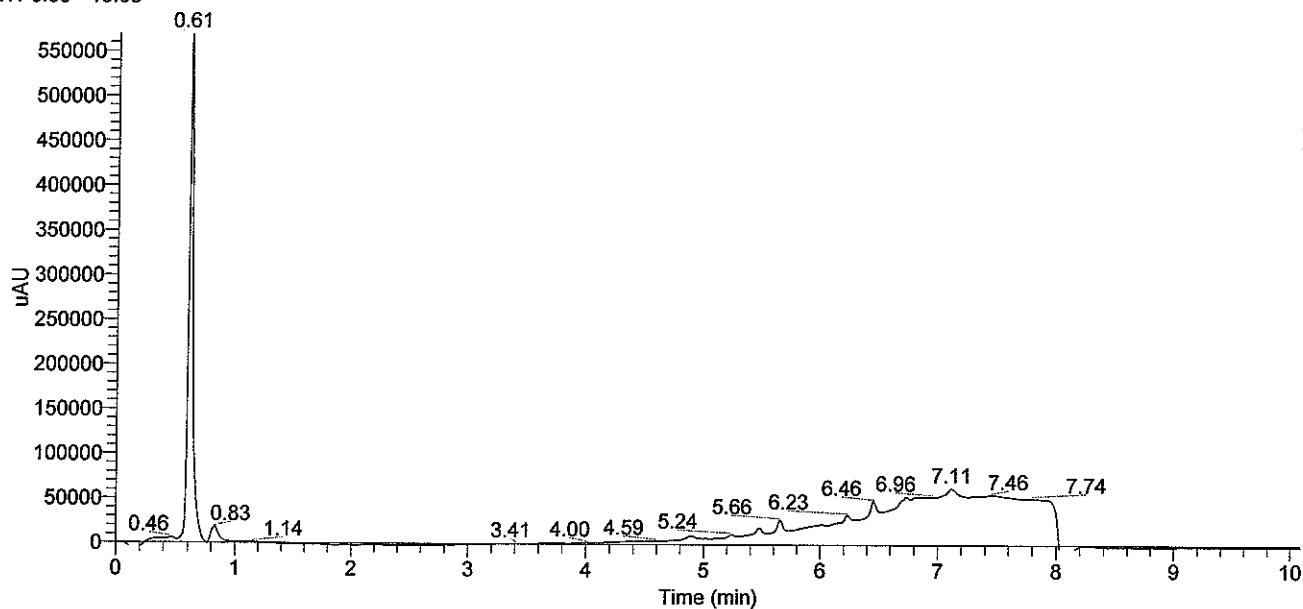
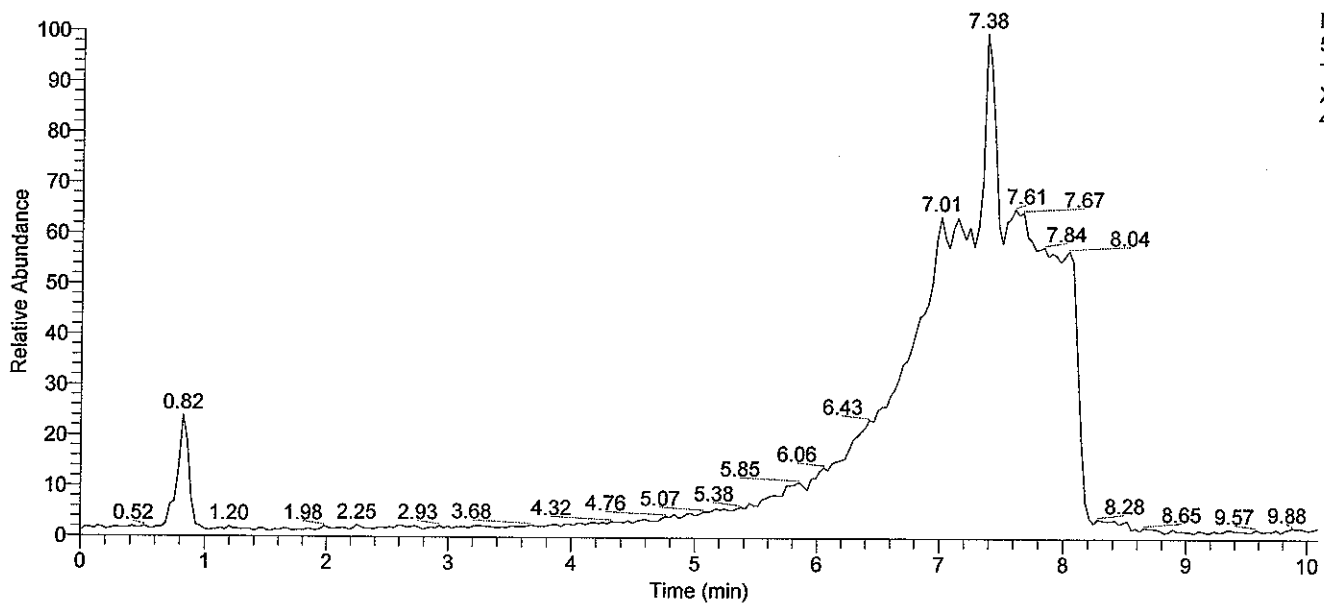


RT: 0.00 - 10.08



NL:
5.69E5
Channel B
UV
XL-45-
47(SUP)

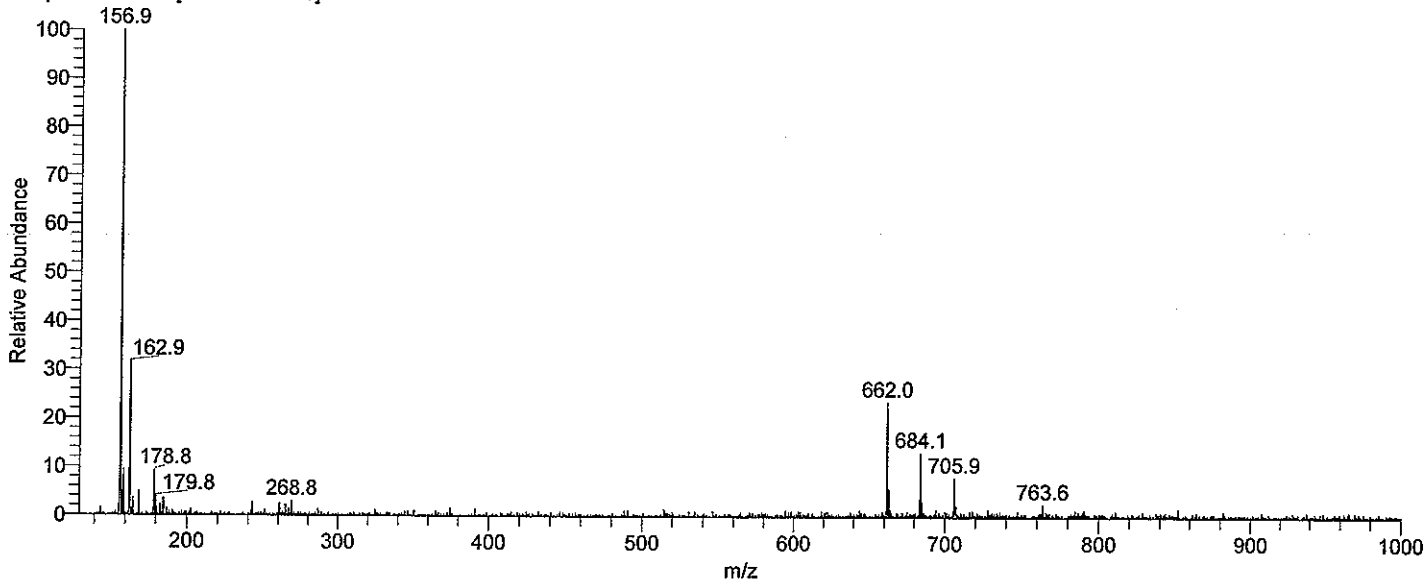
RT: 0.00 - 10.08



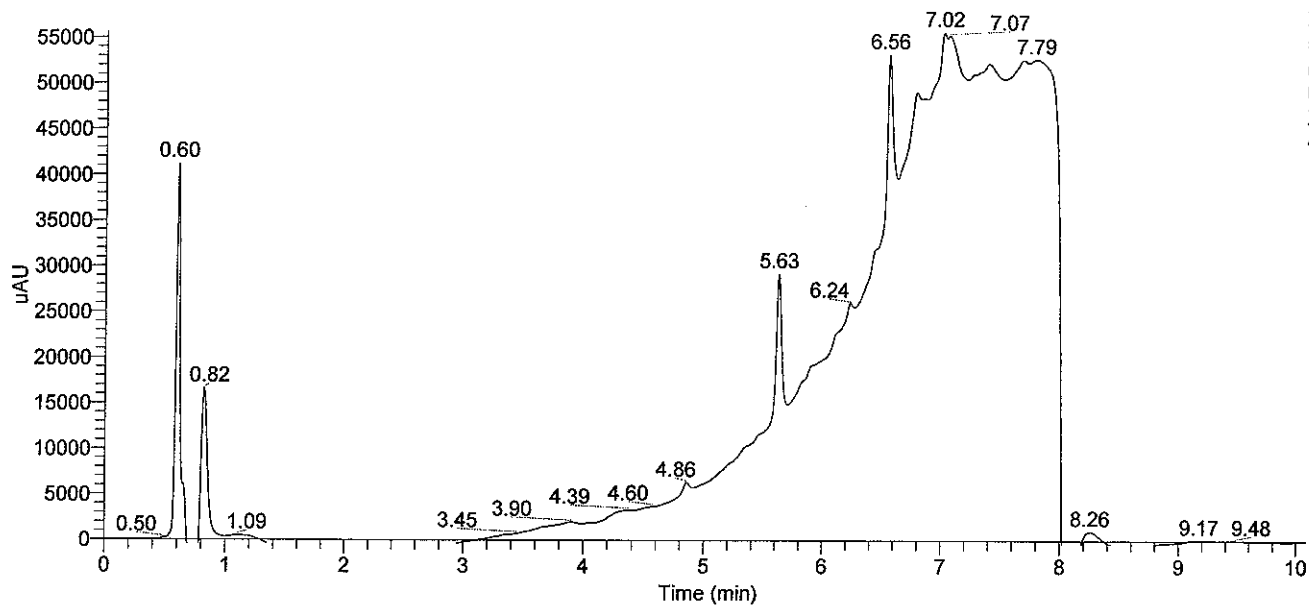
NL:
5.90E7
TIC MS
XL-45-
47(SUP)

XL-45-47(SUP) #23-26 RT: 0.75-0.86 AV: 4 NL: 2.56E5

T: + p ESI Full ms [50.00-2000.00]

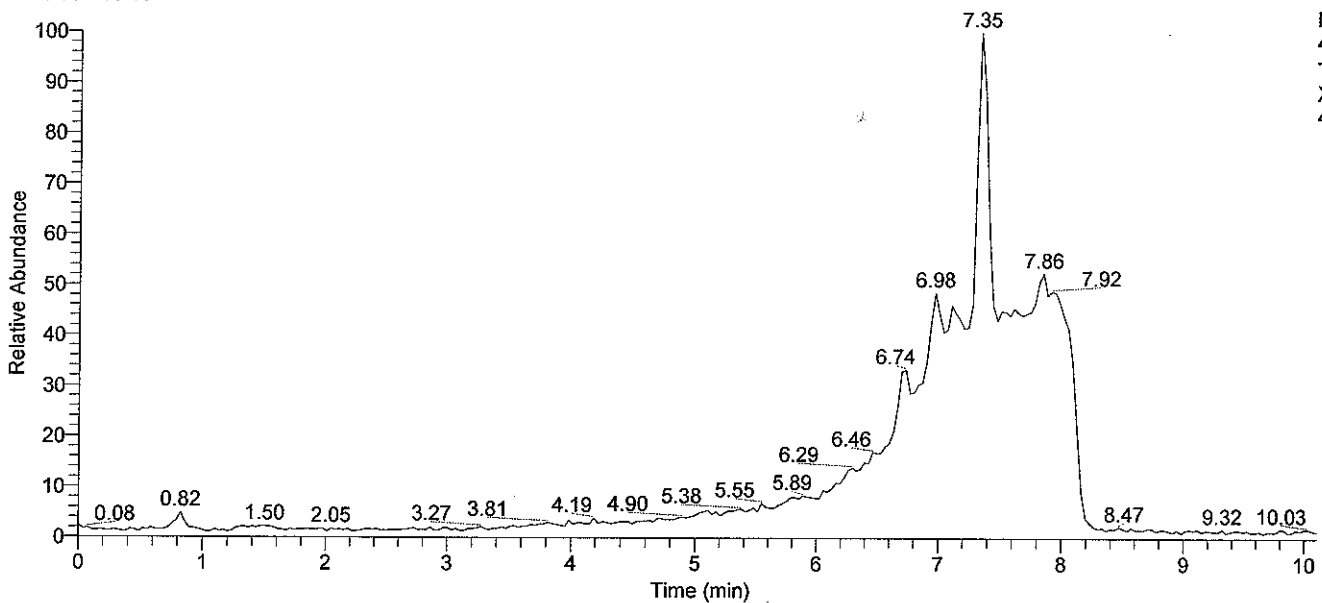


RT: 0.00 - 10.08



NL:
5.56E4
Channel B
UV
XL-45-
47(Pellet)

RT: 0.00 - 10.10



NL:
4.80E7
TIC MS
XL-45-
47(Pellet)

XL-45-47(Pellet) #21-27 RT: 0.69-0.89 AV: 7 NL: 2.99E4
T: + p ESI Full ms [50.00-2000.00]

